

ISLANDS REPRESENT



5%

Of the Earth's
landmass



41%

Of all highly
threatened
(Critically
Endangered
or Endangered)
terrestrial
vertebrates



75%

Of bird,
amphibian,
mammal,
and reptile
extinctions



11%

Of our world's
population



86%

Of all recorded
extinctions on
islands



NEW RESEARCH:

**NATIVE TREES THRIVE
FOLLOWING RAT REMOVAL**



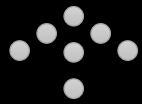
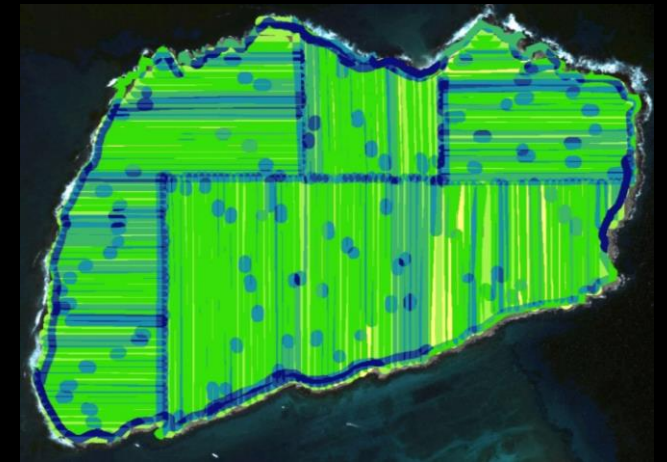
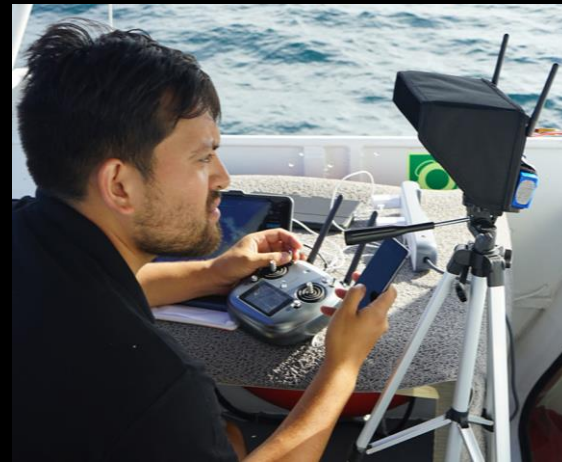
**ISLANDS
OFFER HOPE**



ISLAND CONSERVATION

Preventing Extinctions

SCALING DRONES FOR SUCCESS



Data Mule



Species Detection



Broadcast application



ISLAND CONSERVATION

Preventing Extinctions